

A Project by :

SHREEJI
BUILDERS
Quality is our responsibility

Site Address : SHREEDHAR SPARSH
Nr. Shreedhar Heaven, B/h. Royal Restaurant,
S.P. Ring Road, Vastral, Ahmedabad.

Contact :
+91 93281 03161
+91 88662 14567

Architect

Z-AXIS
ARCHITECTS

Landscape Architect &
Interior Designer

Bhavin Amrutiya Architects
+91-898 000 6409


SHREEDHAR 

2 & 3 BHK PREMIUM FLATS & SHOPS



GOOD NEIGHBORS MAKE A HUGE **DIFFERENT IN THE QUALITY OF LIFE**

What do you wish the most...?
A secret desire to enjoy the lavishness in its true sense...
A trustworthy friend...
A unique lifestyle of your own...
A peaceful life...

All that your heart wished is about to be fulfilled with Shreedhar Sparsh.
Let these 2 & 3 BHK Living Space apartments & shops
be the answer to your every deepest wish and desire.

The set of elegant abodes elevating both in stature and
style take you to the flight of eminence and eternal happiness.



EXCEPTIONAL HOMES SPACIOUS LIVING



Welcome to Shreedhar Sparsh. Designed with grand towers offering 2 & 3 BHK Living Space. Surrounded by panoramic vistas of the lush green area, Shreedhar Sparsh encourages green living to protect the environment.

Shreedhar Sparsh is perfectly located in a neighborhood that boasts everything the comfortable life demands, while also giving you an easy access to every part of the city. With all the world-class amenities and a convenient location, life here is truly well-balanced.



A WISH FOR HEALTHY & DIVINE LIFE

At Shreedhar Sparsh, our primary care is your health, Staying tangled in your multi-faceted job environment makes your life a stressful experience. By offering you multiple outdoor and indoor games & temple, we fulfill your wish for a divine and healthy life.



JOGGING
TRACK



INDOOR
GAME



SENIOR CITIZEN
SITTING



CHILDREN
PLAY AREA



MEDITATION
YOGA DESK



MODERN
CLUB HOUSE



DIVINE
TEMPLE



A WISH FOR A SUPERIOR LIFE

Leading superior life is the first necessity of luxury living. Amenities that are designed to be statuesque & time-efficient helping you lead a serene life are a very integral part of Shreedhar Sparsh's core concept of lavish lifestyle.



ATTRACTIVE
2 ENTRANCE GATE



SECURITY CABIN
(24 HOURS)



PARKING
(WITH BASEMENT)



LANDSCAPED
GARDEN



CCTV CAMERA
(24 HOURS)



GAS
CONNECTION



WATER SUPPLIER
(WITH WATER METER)



BOREWELL



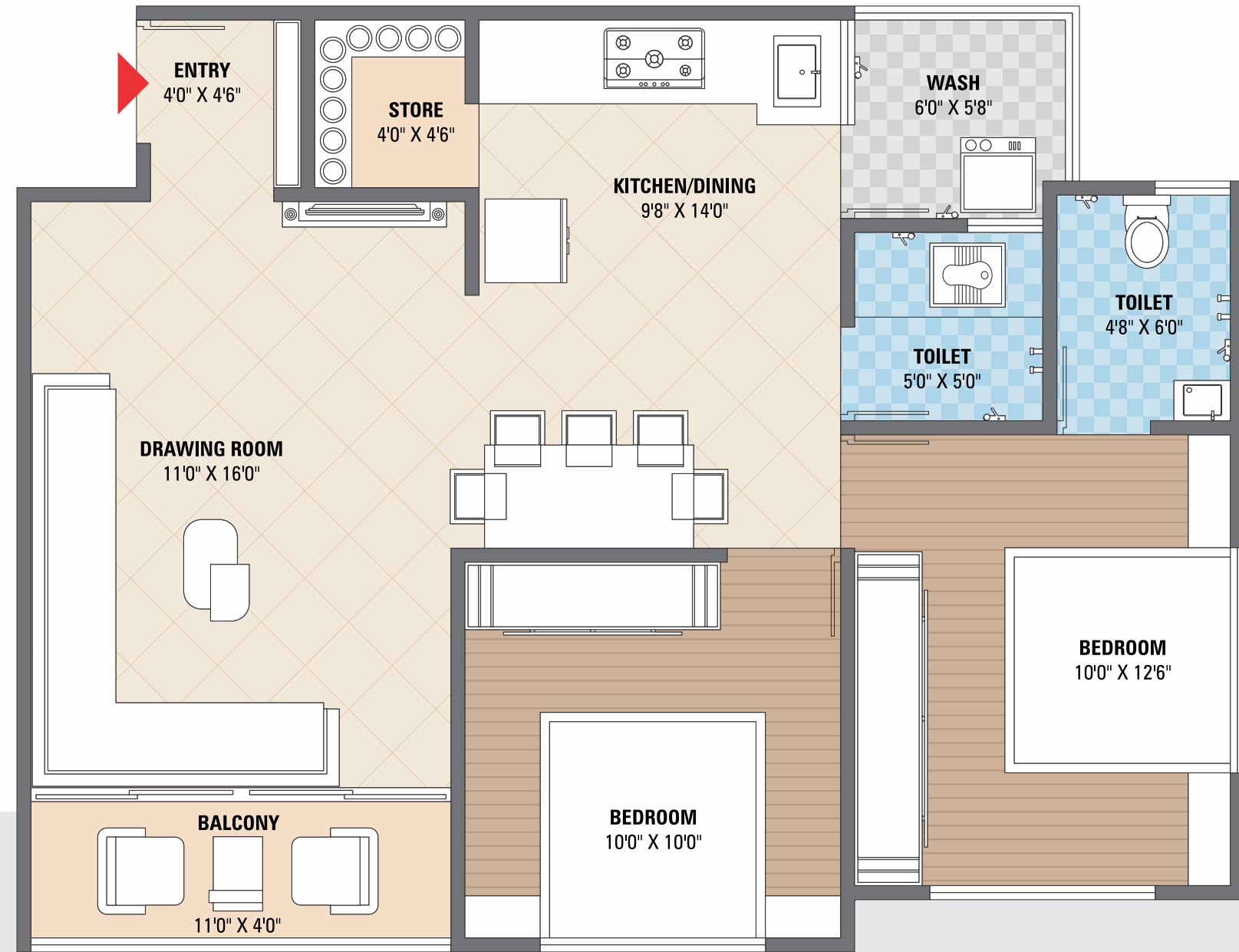
AUTOMATIC
LIFT



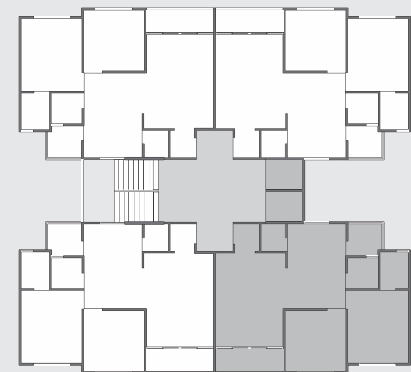
TYPICAL LAYOUT PLAN



UNIT PLAN
2 BHK



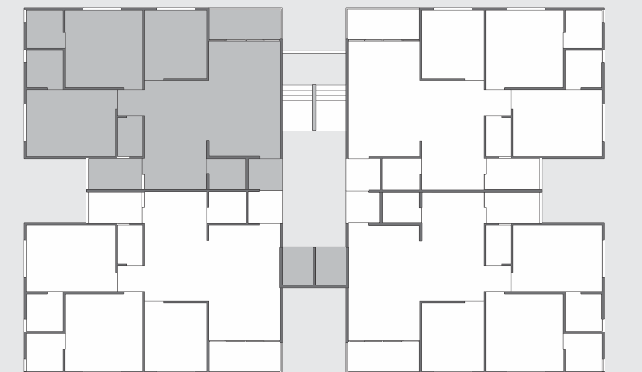
BLOCK - A | B | C | D



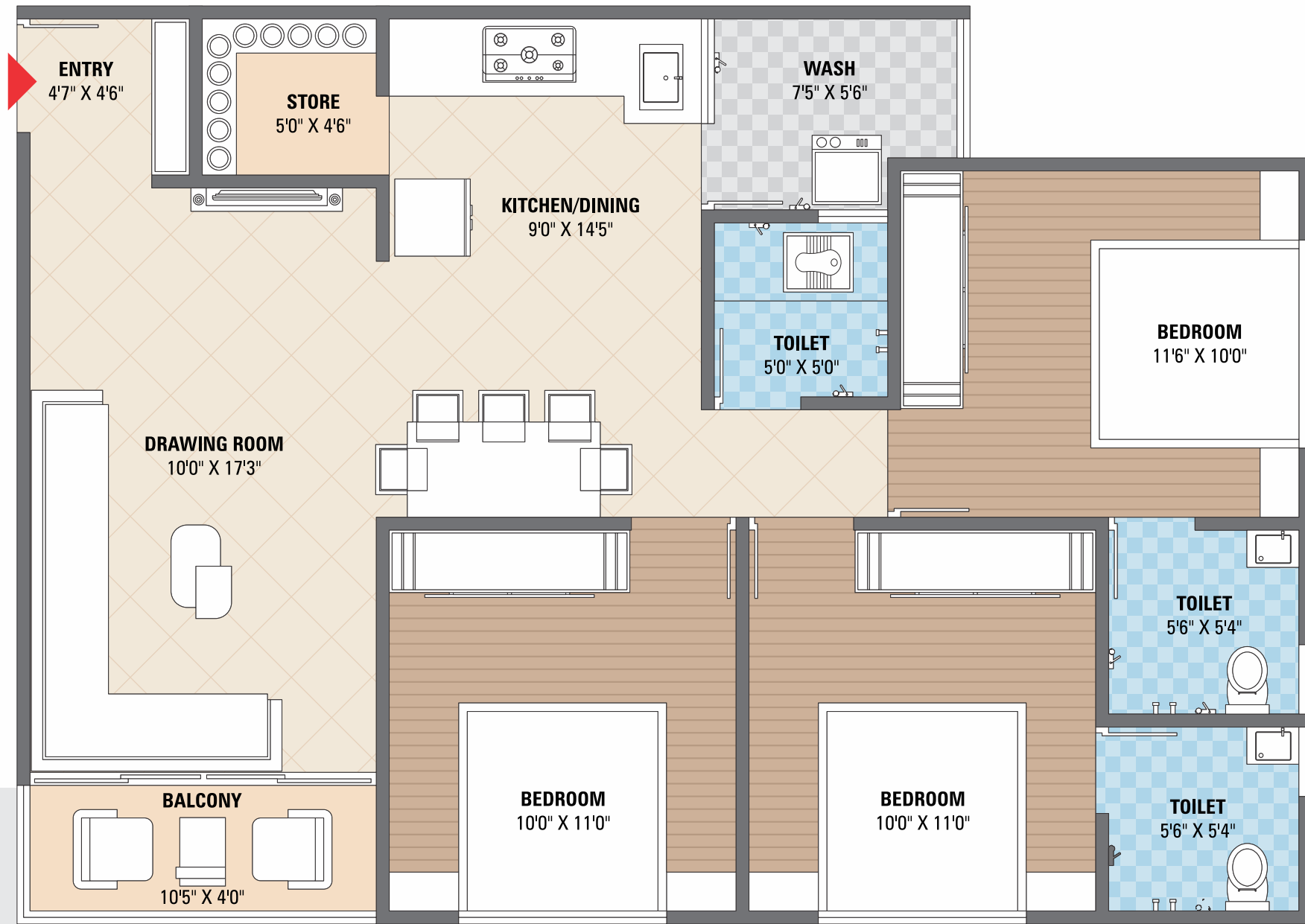
UNIT PLAN
3 BHK



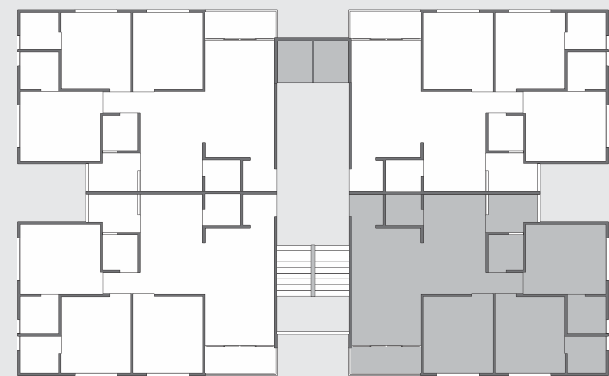
BLOCK - E | F



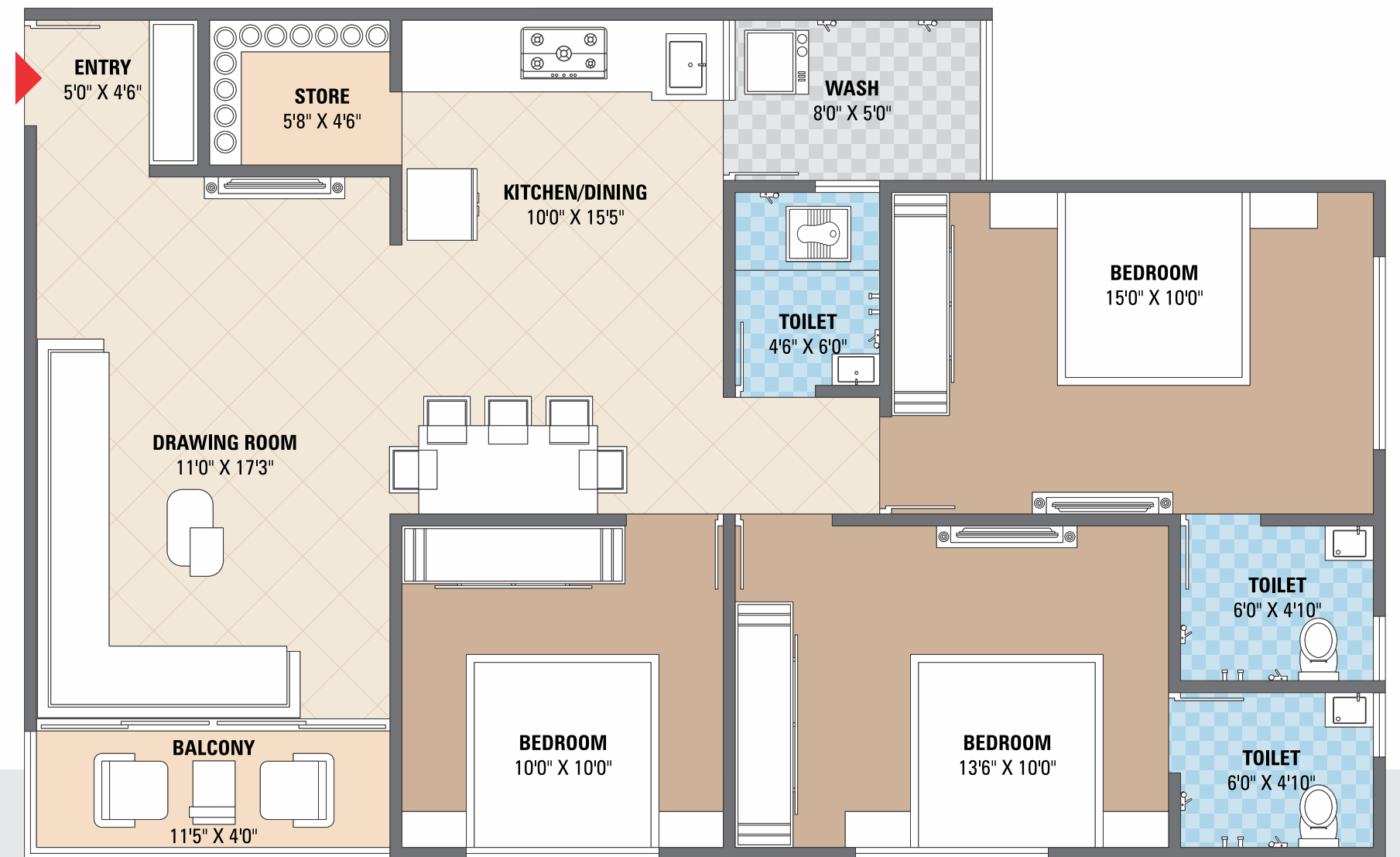
UNIT PLAN
3 BHK



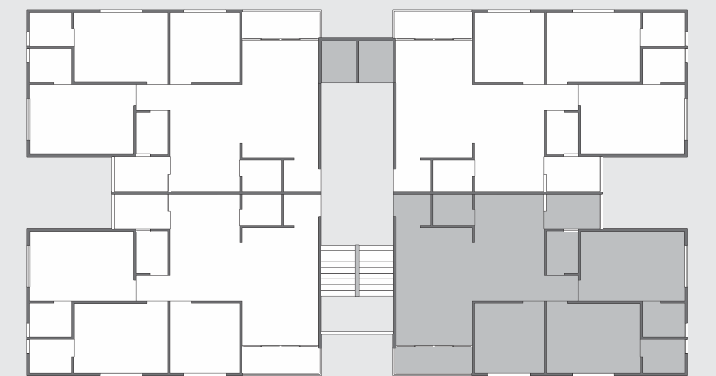
BLOCK - G | H | J



UNIT PLAN
3 BHK



BLOCK - I



A WISH FOR UNPARALLELED QUALITY

FLOORING

Mirror polished double charged vitrified tiles flooring in entire flat

KITCHEN

Granite platform with S.S. sink & tiles dado up to lintel level in kitchen

DOORS & WINDOWS

Wooden frame with decorative main door & flush door inside.
All windows with fully glazed shutter with aluminium section

BATHROOMS & PLUMBING

Glazed tiles dado up to lintel level in all bathrooms.
Concealed plumbing with good quality fittings

ELECTRIFICATION

Concealed I.S.I. copper wiring with standard accessories

STRUCTURE

Earthquake resistance RCC frame structure work

WALL FINISH

External double coat sand face plaster
with acrylic paint Internal mala plaster with wall putty

TERRACE

China mosaic flooring with water proofing

• This brochure is not as legal part of document but only for easy understanding to customer • Irregular payment cause for cancellation of the booking • All rights are reserved by developers to make any changes in plan, scheme elevation, dimension and other details there in to comply with statutory regulation shall be binding to all the members • Subject to Ahmedabad Jurisdiction • Payments in favour of "SHREEJI BUILDERS"



A WISH FOR AN EXOTIC LOCATION

What more do we need when we can reach the stars of the city? Shreedhar Sparsh is certainly a center to some of the best outlandish landmarks and amenities which make us a with granting positioning of Ahmedabad. Some of the best schools, malls, hotels, restaurants, hospitals, temples, commercial and corporate offices fall into our radius, making your life a perfect combination of comfort, convenience and luxury.

